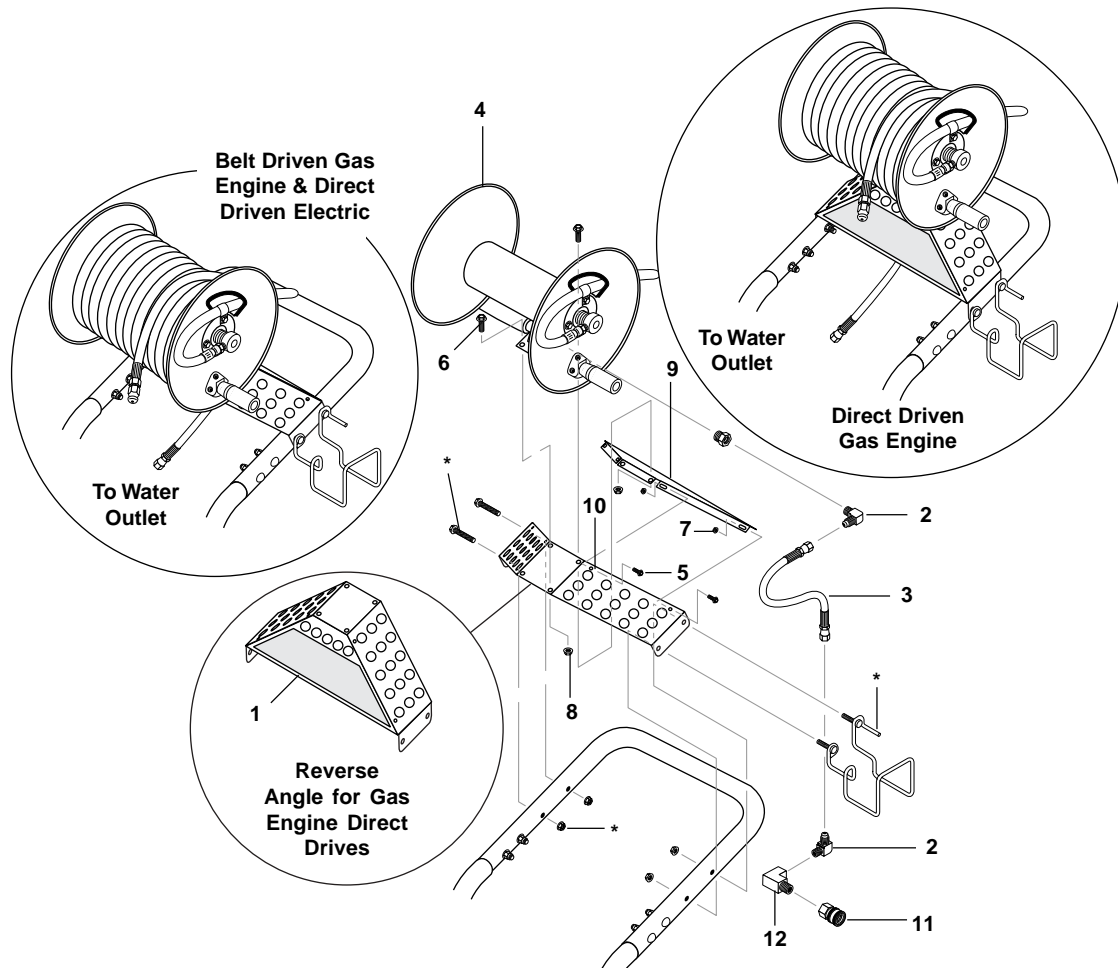


# HOSE REEL INSTALLATION INSTRUCTIONS

Kits #9.801-025.0, #9.801-026.0, #9.801-027.0

Kits #35-350, #35-351, #35-352, #35-353, #35-354, #35-355



\* - Existing machine hardware.

ITEM	PART NO.	DESCRIPTION		QTY
1	9.800-009.0	Label, Gas Engine, Instr./Warning, Hose Reel Plate	10-02051	1
	9.800-093.0	Label, Electric, Instr./Warning, Hose Reel Plate	10-02052	1
2	9.802-039.0	Elbow, 1/2" JIC, 3/8", 90°	2-0053	2
3	9.802-241.0	Hose, 3/8" x 25", 2 Wire, Pressure Loop	4-02047725	1
4	9.802-269.0	Hose Reel, 100' Non-Pivot, E-Zee w/Pin Lock	4-02755030	1
5	9.802-754.0	Screw, 1/4" x 1/2" HH NC, Whiz Loc	90-19711	4
6	9.802-767.0	Screw, 3/8" x 3/4" HH NC, Whiz Loc	90-1996	4
7	9.802-775.0	Nut, 1/2" Flange, ZN	90-200012	4
8	9.802-781.0	Nut, 3/8", Flange Whiz Loc, NC	90-20040	4
	N/A	Stabilizer Plate, CWW Hose Reel Bracket, Red	95-07104941	1
9	9.803-116.0	Stabilizer Plate, CWW Hose Reel Bracket, Black	95-07104940	1
	N/A	Mount, CWW Hose Reel Bracket, Red	95-07104942	1
10	9.803-117.0	Mount, CWW Hose Reel Bracket, Wrinkle Black	95-07104943	1
	9.802-166.0	Coupler, 3/8" Female, Brass	2-2002	1
12	9.802-212.0	Elbow, 1/2" Street	3-0032	1